

Community Benefit Report

BUILT FOR KIDSSM

FY23



Children's Mercy
KANSAS CITY

Mission

Children’s Mercy is a leading independent children’s health organization dedicated to holistic care, translational research, breakthrough innovation, and educating the next generation of caregivers.

Together, we transform the health, wellbeing and potential of children, with unwavering compassion for those most vulnerable.

Vision

To create a world of wellbeing for all children

Values



Inclusion

Respect for our differences, with celebration of our uniqueness



Team

Stronger together, with a commitment to one Children’s Mercy



Curiosity

Quest for knowledge, with a passion to find answers



Kindness

Love and compassion, with empathy



Integrity

Honesty, with accountability and transparency

A NOTE FROM CEO Paul Kempinski

Dear Friends and Colleagues,

At Children’s Mercy, we are proud of our commitment to creating healthy futures for all children. For 125 years, Children’s Mercy has provided loving and compassionate care to children across the Kansas City region. Caring for children and families extends beyond the walls of our hospitals and clinics as we strive to develop healthy and safe communities for children to learn and grow.

The 2023 Community Benefit Report demonstrates our commitment to improving the health and wellbeing of children in the community. In 2023, our community investments totaled more than \$245 million or \$671,645 per day to support programs and services that address community-identified needs. This investment helps us strive to create healthier and thriving communities for all children.

This report provides a snapshot of our efforts to improve access to care, to support the education of providers, to better address mental and behavioral needs of children, and to address social determinants of health. Much of this work would not happen without community partners and we greatly value those partnerships.

So much has been accomplished and we look forward to continuing this work in the year ahead!

Sincerely,

Paul Kempinski, MS, FACHE
President and CEO





What is Community Benefit?

Children’s Mercy engages in meaningful programs and activities that improve the lives of children beyond the walls of our hospital. These initiatives help support the hospital’s mission to improve the health and wellbeing of children and are part of the annual community benefit we provide. To be considered community benefit, a program or service must meet an identified community need and at least one of four objectives:

- Improve access to health care.
- Enhance the health of the community.
- Advance medical or health knowledge.
- Relieve or reduce a governmental burden or other community efforts.

Community benefit activities are classified by the Internal Revenue Service in the categories of uncompensated care, subsidized health services, health professions education, research, community health improvement, community benefit operations and community building.

Community Investment¹ Fiscal Year 2023²

Uncompensated Care	\$155,799,859
Charity Care at Cost	\$36,255,967
Unreimbursed Medicaid	\$119,543,892
Subsidized Health Services	\$37,151,382
Health Professions Education	\$19,189,216
Research	\$17,042,647
Community Health Programs and Partnerships	\$14,842,160
Community Health Improvement Services	\$11,961,510
Partnerships, Services, Support ³	\$1,169,167
Community Benefit Operations	\$1,874,136
Community Building Activities ⁴	\$928,627

Total Community Investment \$245,150,428 | \$671,645/day

For more information about our work in the community see: childrensmercy.org/in-the-community/community-benefit/
¹Expenses rounded up.
²Fiscal Year 2023: July 1, 2022-June 30, 2023.
³This category per IRS guidelines is named Cash and In-Kind Donations.
⁴Community building activities are reported on an annual basis to the IRS separate from the other Community Benefit categories. For the purpose of this report, we incorporate community building in the total Community Benefit.



Easing the Financial Burden of Health Care Costs on Families

Uncompensated Medical Care: \$155,799,859

For 125 years, Children’s Mercy has provided care without regard to a patient’s or family’s ability to pay. In Fiscal Year 2023, the total uncompensated medical care provided by Children’s Mercy included:



79,684

individuals receiving free or discounted inpatient and outpatient care when the recipient could not afford services or lacked adequate health insurance coverage totaling \$36,255,967.



\$119,543,892

in unreimbursed cost, or shortfalls that occur when providers are reimbursed below the cost of providing services for Medicaid. With approximately 50% of our patient population covered by Medicaid, the program is extremely important.

Children’s Mercy provides staff to assist families who cannot afford services or lack health insurance. 3,897 individuals received enrollment assistance in Medicaid in Fiscal Year 2023. For more information about our Financial Assistance Policy, visit childrensmercy.org/financialcounseling

FOR MORE THAN 125 YEARS,
CHILDREN’S MERCY HAS CONTINUED
TO TREAT EVERY CHILD WHO PASSES
THROUGH OUR DOORS.

Meeting the Health Needs Of The Region’s Children

Subsidized Health Services:
\$37,151,382

Children’s Mercy takes a thoughtful, strategic approach in offering a set of clinical services that meet the needs of the region’s children. Often, this means the services are provided at a financial loss. Programs and services that were included in this category in 2023 reached over 119,000 children across the region.

FY23 Subsidized Clinics, Programs, and Services

- Endocrinology
- Gastroenterology
- General Pediatrics
- Genetics
- Hematology & Oncology
- Pain Management
- Rheumatology
- Weight Management Clinics



Educating the Next Generation of Health Care Professionals

Health Professions Education: \$19,189,216

Training the next generation of pediatric health professionals increases access to care and enhances children's health outcomes. Supporting continuing education opportunities and training programs is essential to improving care for children across the community. Programs and activities included in health professions education are:

- Trainings and rotations for fellows, residents and medical students.
- Pediatric advocacy and global health rotations.
- Nursing student clinical rotations.
- Allied health students in practicums, internships and clinical rotations.
- Continuing education events and consultation services for practicing health professionals.

Highlights:

- 99 advanced practice nursing students participated in clinical rotations.
- 242 allied health students participated in practicums, internships or rotations.
- 58 clinical fellows trained in 22 subspecialties.
- 178 residents enrolled in pediatric residency program.



A Research Center for Children

\$17,042,647

Children's Mercy believes breakthroughs happen when the walls between research and medicine are eliminated, allowing researchers and physicians to work side by side. The Children's Mercy Research Institute (CMRI) integrates research and clinical care with multidisciplinary teams at the point of care while bringing together nationally recognized expertise in genomic medicine, precision therapeutics, population health and health care innovation.

As a result, we accelerate the development of groundbreaking individualized therapies and treatments that transform the potential of all children, one child at a time.

- Over \$17 million in research funding that met the criteria for Community Benefit.
- 584 active sponsored research projects.
- 410,000 square feet dedicated to research.

For more information on the Children's Mercy Research Institute, visit childrensmercy.org/research.

Commitment to Community Engaged Research

We are committed to designing and implementing research studies that are responsive to the priorities of the communities we serve. We are committed to partnering with patients, families and community members to ensure transparency in research activities from study inception to dissemination. We do this by supporting engagement of diverse patients, families and communities in the design, implementation and dissemination of research through the CMRI Patient, Family and Community Advisory Board.



In Fiscal Year 2023, some of this work included:



3,535

car seats, booster seats, or consultations provided by the Center for Childhood Safety



\$1.1

million invested in partnerships with community-based nonprofits and health agencies



4,263

employee hours invested to local and state boards and advisory committees



19,204

families referred to community resources by the Center for Family and Community Connections



351

persons receiving an asthma or lead home risk assessment or consultation

Commitment To Community Health Programs And Partnerships:

\$14,842,160

Children's Mercy establishes programs and initiatives to address the identified health needs of children in the community. In collaboration with other community organizations, we strive to address the root causes of health problems through a variety of health education, outreach and prevention services.

In addition, Children's Mercy partners with several community organizations by investing in their programs and through service on community boards. This involvement allows us to expand our reach in improving child and community health.

Participation in

99

community outreach events reaching over

9,200

individuals



139

families benefited from

3,893

encounters in the TIES and Healthy Families America home visiting program



2,496

individuals received transportation assistance



98,518

phone calls to the 24/7 Nurse Advice Line

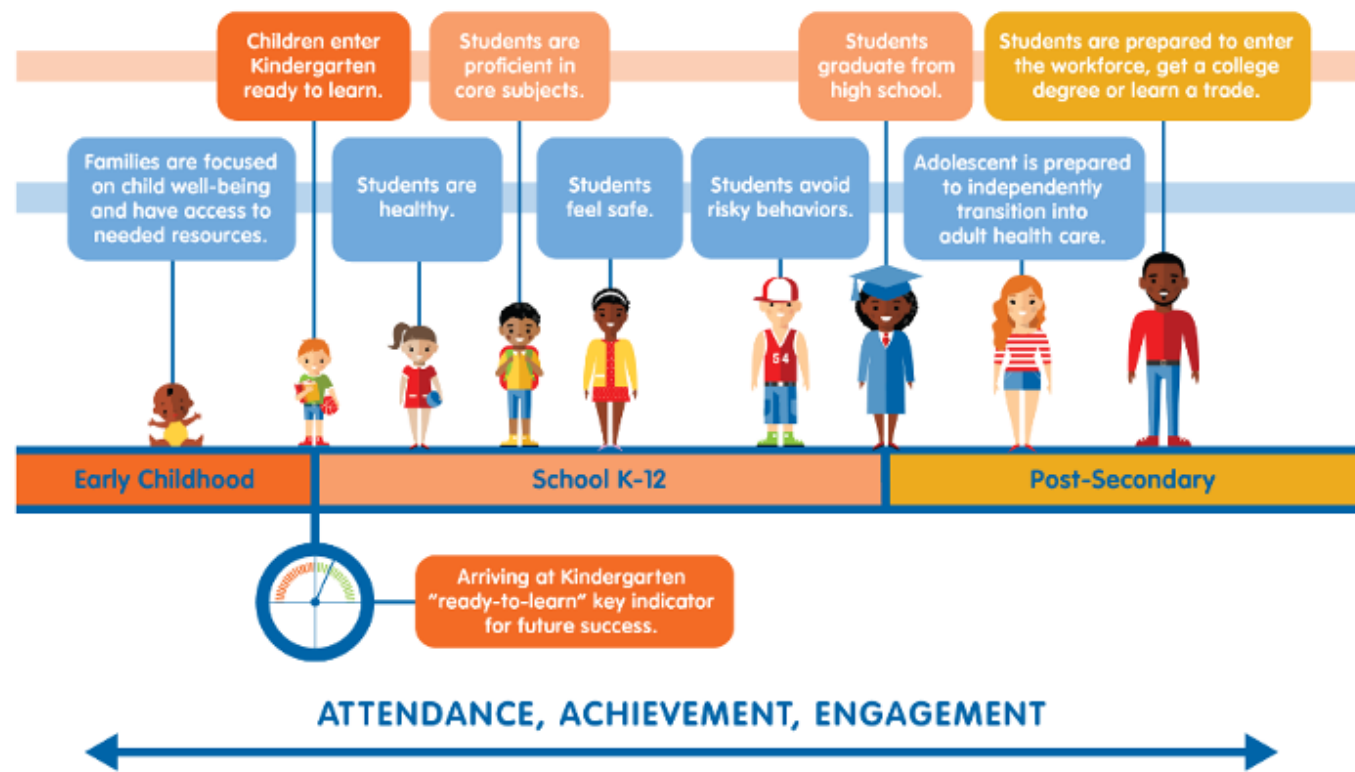


9,104

children received free lunches during the summer at multiple Children's Mercy locations



Growth and Learning School and Health Interactions



Spotlight: Promoting School Health in the Community

Our commitment to do more for kids is at the heart of everything we do. That's why we are dedicated to partnering with schools to help the kids in our community. From our Athletic Training Program to bullying prevention, we are in schools every day. Together, we can help kids overcome whatever's standing in their way.

LAUNCHING THE SCHOOL YEAR RIGHT: KCPS Fest Back to School Health Fair

Children's Mercy is proud to partner with the Kansas City Public Schools at their annual back to school festival – KCPS Fest. Every year, Children's Mercy team members come together to provide sports physicals, asthma screenings, and share other important health information with students and parents. In FY23, we estimate having served over 1,000 students and families during this event, helping them start the school year with the best possible health outcomes.

FRONTLINE WELLNESS: Empowering School Nurses at the 44th Annual School Health Conference

The annual school health conference, hosted and led by Children's Mercy, provides school nurses and other school-based care providers with the education and tools necessary to support the health and wellbeing of children and youth while in school. In FY23, Children's Mercy hosted 220 school nurses and care providers, reinforcing the collaborative work between health care providers and the education sector.

STOPPING VIOLENCE: Red Card Anti-Bullying Campaign

In 2016, Children's Mercy and Sporting Kansas City introduced the RED CARD campaign to create positive change in the health and wellbeing of our community.

Bullying has become an increasingly prevalent problem in Kansas City. Both kids who are bullied and kids who bully others can have long-term mental and physical health concerns. The RED CARD campaign helps kids, teens and adults speak up against bullying.

"Bullying impacts everyone," said Ram Chettiar, DO. "Our youth are suffering through a mental health crisis with rising rates of depression, anxiety and suicide. RED CARD teaches youth to 'call it when you see it.' Our belief and passion for this campaign strengthens year after year as we see it grow and galvanize kids to 'call it.'"

Each year, during the months of September and October, the RED CARD team conducts in-school assemblies at a set number of local elementary and middle schools. During FY 2023, RED CARD presented to over 6,000 students during 14 in-school assemblies. Additionally, the first ever Virtual Assembly was created and launched to provide a similar experience to the remaining RED CARD partners, impacting over 23,000 students in total.



In 2023, the K.I.T.S. campaign was born. Standing for Kindness In The Schools, the RED CARD team surprises students from each partner school with a brand new Sporting KC jersey with the name plate "KINDNESS." These students, chosen by their schools, are selected for their continual spirit of kindness and standing up for their peers. In 2023, 90 students from the 30 school partners were presented with a kit. In 2024, the campaign will follow suit in honoring students from the now 52 partners with kits as well as a custom "Kindness Champion" soccer-style scarf.

"This was such an amazing thing we got to do with our students in front of a ton of alumni, former teachers, and district employees," said Trish Madsen, counselor at Harmony Middle School. "All the students' families were there. Thanks to Children's Mercy and Sporting for allowing us to continue to spread kindness."

Spotlight:

A Mental Health Epidemic

Growing Crisis Compounded by a Shortage of Resources

Adam was 21 years old when he took his own life. As a child, he was diagnosed with ADHD, and battled depression and anxiety for many of his teen years. His family struggled to find mental health resources that matched his needs.

Adam is not alone. In November 2021, the Children's Hospital Association, the American Academy of Pediatrics and the American Academy of Child & Adolescent Psychology declared the youth mental health crisis a national emergency.


Children's Mercy is taking action – leveraging nationally-recognized pediatric expertise and investment from our community to transform care for children. Illuminate is an ambitious, five-year plan lighting the path forward for the youth mental health crisis by increasing access to evidence-based treatment with specific focus on equity for our most vulnerable populations.

“There simply are not enough mental health resources available for kids – we must do more.”

– Heather, Adam's mom and Assistant Director of the Children's Mercy Critical Care Transport Team

THE ILLUMINATE PLAN

4 STRATEGIES • 14 PROJECTS OVER 5 YEARS • 80,000+ KIDS • \$150M NEW INVESTMENT

 FACILITATE EARLY INTERVENTION	 INCREASE SPECIALTY SERVICES	 INVEST IN RESEARCH & INNOVATION	 EXPAND INPATIENT HOSPITAL CARE
 Mental Health Integration in Primary Care	 Depression & Anxiety	Research & Innovation <ul style="list-style-type: none">• Precision dosing for mental health medication• Ensuring equity in care• Parent education• Safety plan app• Clinician education	Inpatient Psychiatric Campus
School-based Programs	Eating Disorders		Acute Mental Health Crisis Center
Care Coordination Intake, Triage & Navigation	ADHD		Partial Hospital Program
Behavioral Therapy Services	Autism		Med-Psych Unit
	Rapid Diagnosis		 = Project fully funded

Addressing the Root Causes of Health Problems:

\$1,125,165

Children's Mercy participates in a variety of community-building activities that address the root causes of health problems such as poverty, homelessness, environmental hazards, and employment. These activities include programs and/or resources intended to make physical improvements to the environment, provide community support, advocate for community health improvements, and address community-wide workforce issues through numerous workforce development outreach initiatives.

In Fiscal Year 2023:

- 1,391 individuals participated in mock interviews or explored future opportunities in health care.
- 1,313 staff hours dedicated to advocating for community health improvement and safety.
- Over \$25,000 invested in the maintenance and improvement of the Children's Mercy Community Garden.



340B Drug Discount Program Summary

The 340B Drug Pricing Program offsets health care costs for vulnerable populations. During this year, we saved an estimated \$96,056,678 by participating in the program, which is administered by the Health Resources and Services Administration.

For more information about our work in the community, visit [childrensmercy.org/in-the-community/](https://www.childrensmercy.org/in-the-community/)



For more information about our work in the community visit:
childrensmercy.org/imagine

Copyright © 2024 The Children's Mercy Hospital. All rights reserved.



24-SIP-3017