

# Hypertriglyceridemia - Severe (SHTG): Inpatient



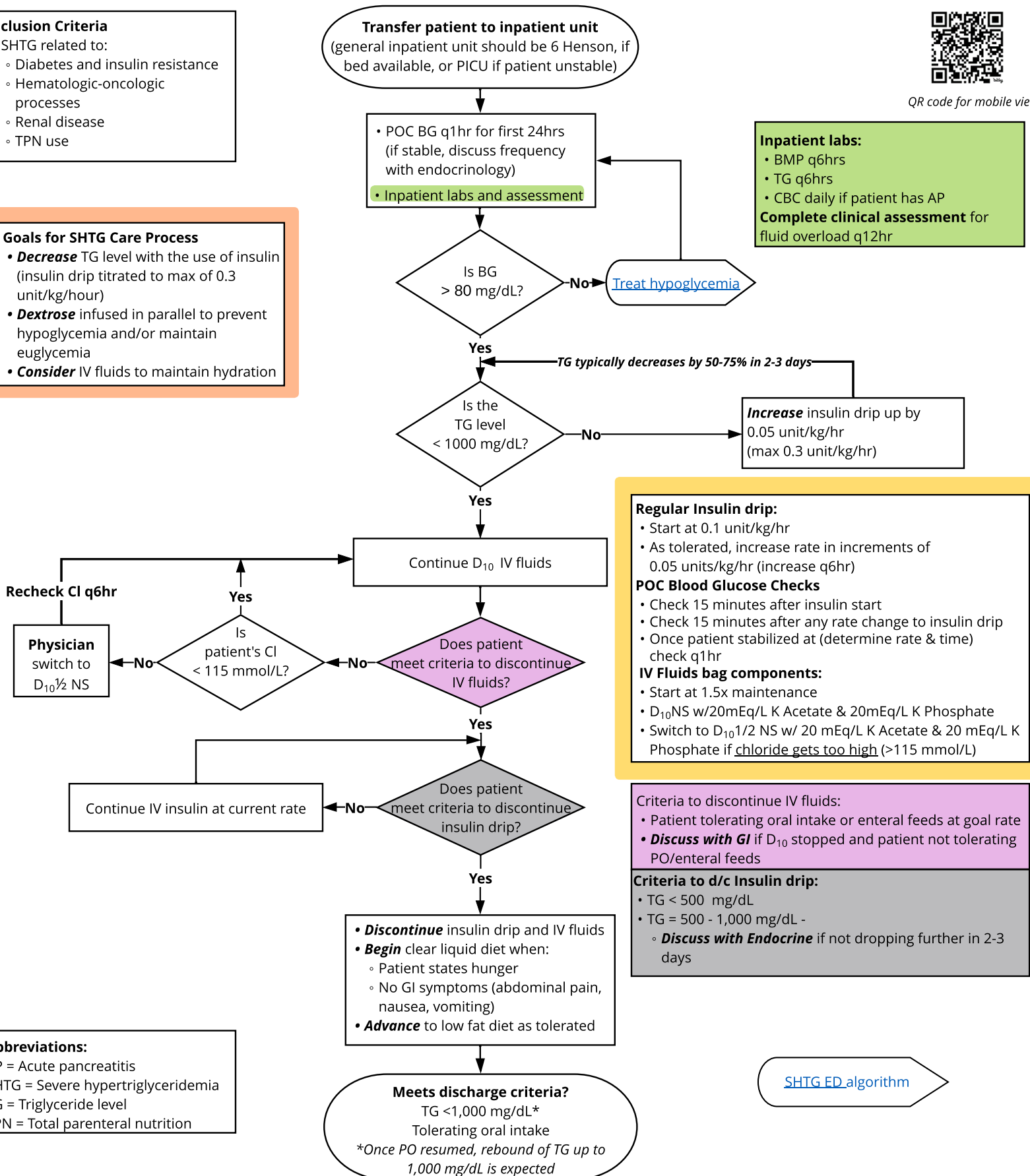
QR code for mobile view

**Inclusion Criteria**

- SHTG related to:
  - Diabetes and insulin resistance
  - Hematologic-oncologic processes
  - Renal disease
  - TPN use

**Goals for SHTG Care Process**

- Decrease** TG level with the use of insulin (insulin drip titrated to max of 0.3 unit/kg/hour)
- Dextrose** infused in parallel to prevent hypoglycemia and/or maintain euglycemia
- Consider** IV fluids to maintain hydration



**Abbreviations:**

AP = Acute pancreatitis  
SHTG = Severe hypertriglyceridemia  
TG = Triglyceride level  
TPN = Total parenteral nutrition