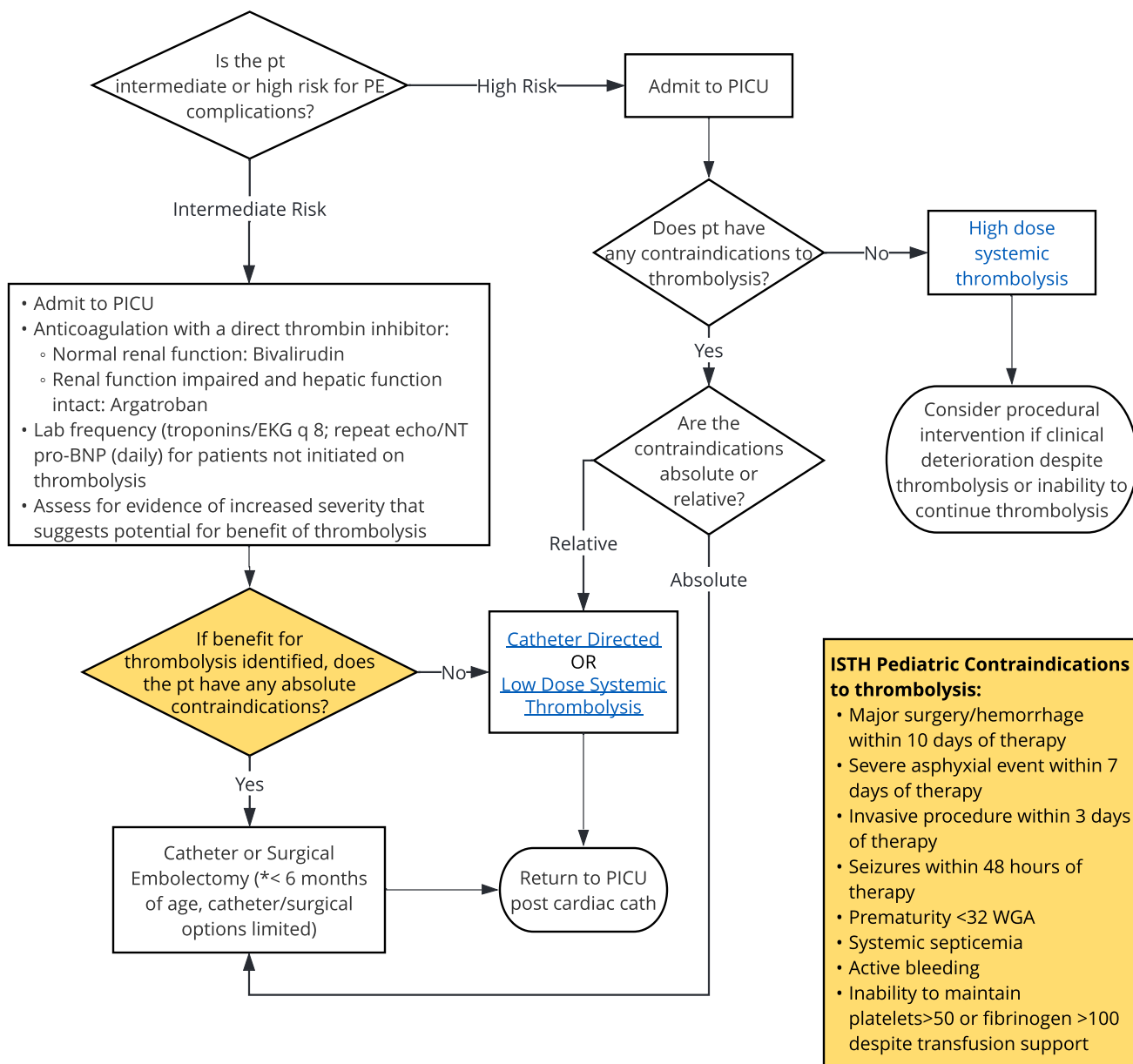




QR code for mobile view

Abbreviations (laboratory & radiology excluded):

- pt = patient
- inpt = inpatient
- ED = Emergency Department
- PE = pulmonary embolism
- PICU = Pediatric Intensive Care Unit
- MIS-C = Multisystem Inflammatory syndrome in Children
- IBD = Inflammatory bowel disease



ISTH Pediatric Contraindications to thrombolysis:

- Major surgery/hemorrhage within 10 days of therapy
- Severe asphyxial event within 7 days of therapy
- Invasive procedure within 3 days of therapy
- Seizures within 48 hours of therapy
- Prematurity <32 WGA
- Systemic septicemia
- Active bleeding
- Inability to maintain platelets>50 or fibrinogen >100 despite transfusion support