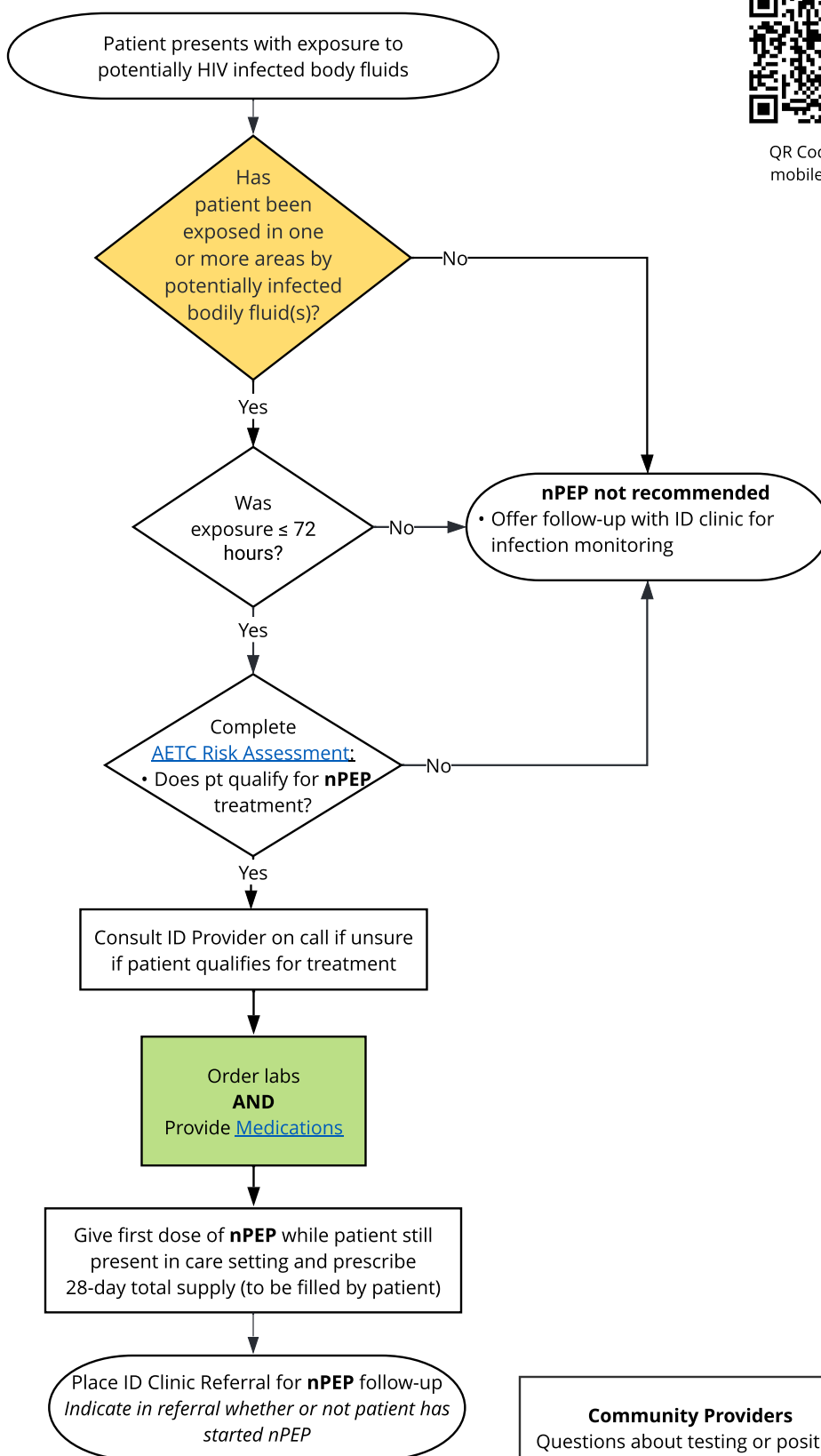




QR Code for mobile view

<p>Inclusion criteria:</p> <ul style="list-style-type: none"> • Patients exposed to potentially HIV infected body fluids in the last 72 hours
<p>Exclusion criteria:</p> <ul style="list-style-type: none"> • HIV or Hepatitis B infected patient • Impaired hepatic function (obtain LFTs) • Impaired renal function (CrCl <60 ml/m²/min) • High risk of fractures • Known exposure to someone with resistant HIV (call ID provider on call) • Repeated contact with same individual > 72 hours prior to presentation • If patient already taking PrEP as prescribed
<p>Areas of potential exposure:</p> <ul style="list-style-type: none"> • Vagina • Rectum • Penis • Eye • Mouth or other mucous membrane • Non-intact skin • Percutaneous contact
<p>Potentially infected bodily fluids:</p> <ul style="list-style-type: none"> • Blood • Semen • Vaginal secretions • Rectal secretions • Breast milk • Any body fluid that is visibly contaminated with blood
<p>Labs</p> <ul style="list-style-type: none"> • HIV Ag/Ab • Hep C ab • BMP • Hep B Panel (sAg, sAb, cAb)



Abbreviations:

- AETC = AIDS Education & Training Centers
- CrCl = creatinine clearance
- ED = Emergency Department
- HIV = Human Immunodeficiency Virus
- ID = Infectious Disease
- LFT = Liver function test
- nPEP = Non-occupational post-exposure prophylaxis

Community Providers
 Questions about testing or positive results ? Contact 1 (800) GO MERCY and ask for Infectious Diseases