



QR code for mobile access

Inclusion Criteria:

- Age 6 months to 6 years with presumed diagnosis of croup

Exclusion Criteria:

- Tracheostomy
- Vocal cord dysfunction

Special Considerations:

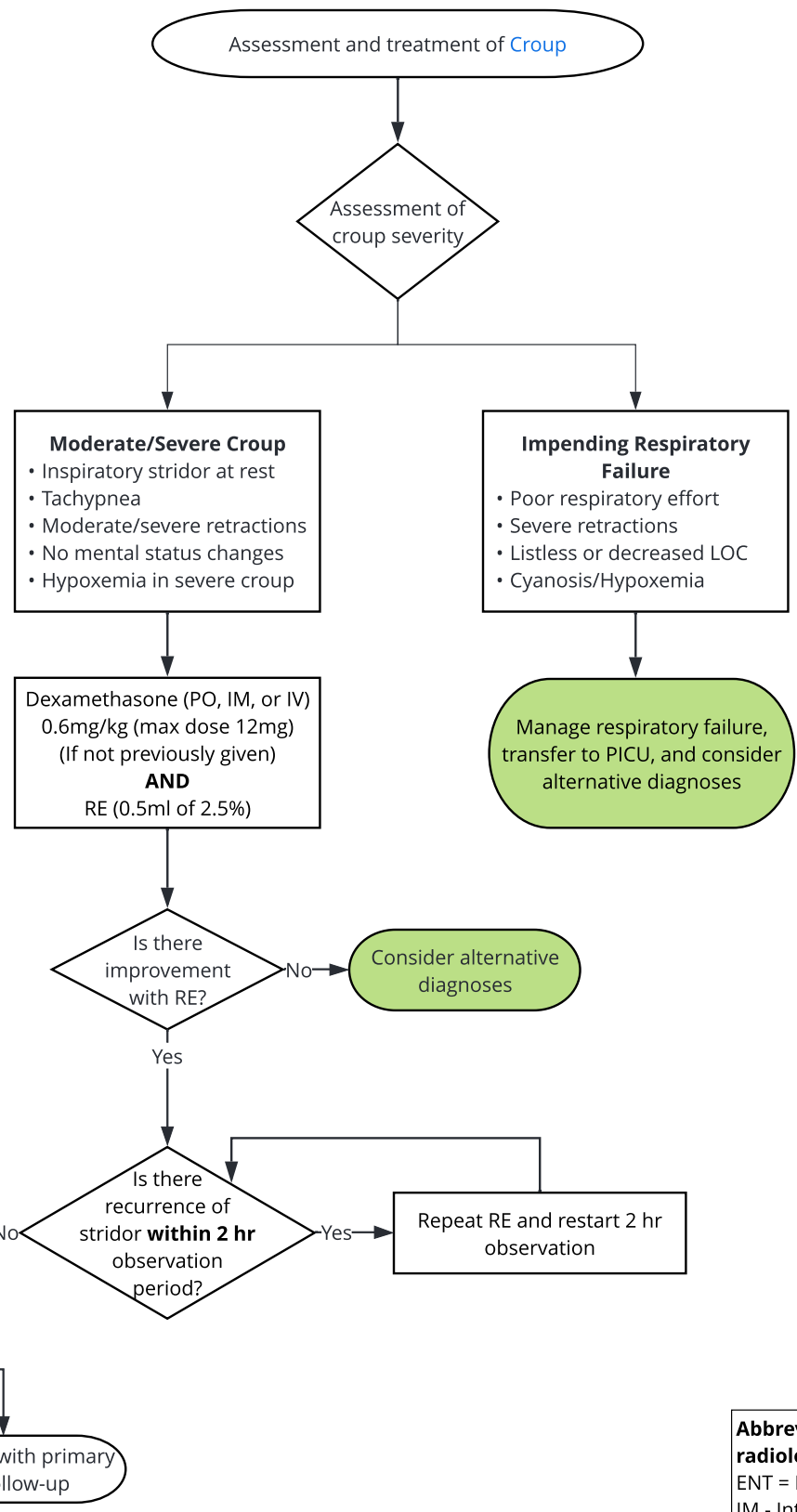
- Known upper airway abnormality
- Hypotonia or neuromuscular disorder
- Complex medical co-morbidities
- History of chronic steroid use
- Spasmodic Croup

Not Routinely Recommended:

- Cool mist
- X-Ray
- Viral testing

Discharge Criteria:

- >2 hours since last RE
- No stridor at rest or other signs of increased work of breathing
- Tolerating PO intake
- Family has access to medical care



Children with the following may have an alternative diagnosis:

- Biphasic or expiratory stridor
- Ill or toxic appearance
- Lack of response to RE
- Unvaccinated

Alternative Diagnoses:

- Bacterial tracheitis
- Epiglottitis
- Retropharyngeal abscess
- Foreign body
- [Anaphylaxis pathway](#)
- Airway anomaly
- [Mediastinal Chest Mass CPM](#)

Abbreviations (laboratory & radiology excluded):

ENT = Ear, Nose, and Throat
 IM - Intramuscular
 IV - Intravenous
 LOC = Loss of Consciousness
 PICU = Pediatric Intensive Care Unit
 PO = By mouth
 RE = Racemic Epinephrine