

Inclusion Criteria:

- Signs & symptoms of constipation:
 - Hard or painful bowel movements
 - Two or fewer defecations per week
 - Fecal incontinence
 - Abdominal pain

Exclusion Criteria:

- [< 2 years of age](#)
- Neurogenic bowel or bladder
- GI motility disorder
- Neutropenia or oncologic diagnosis

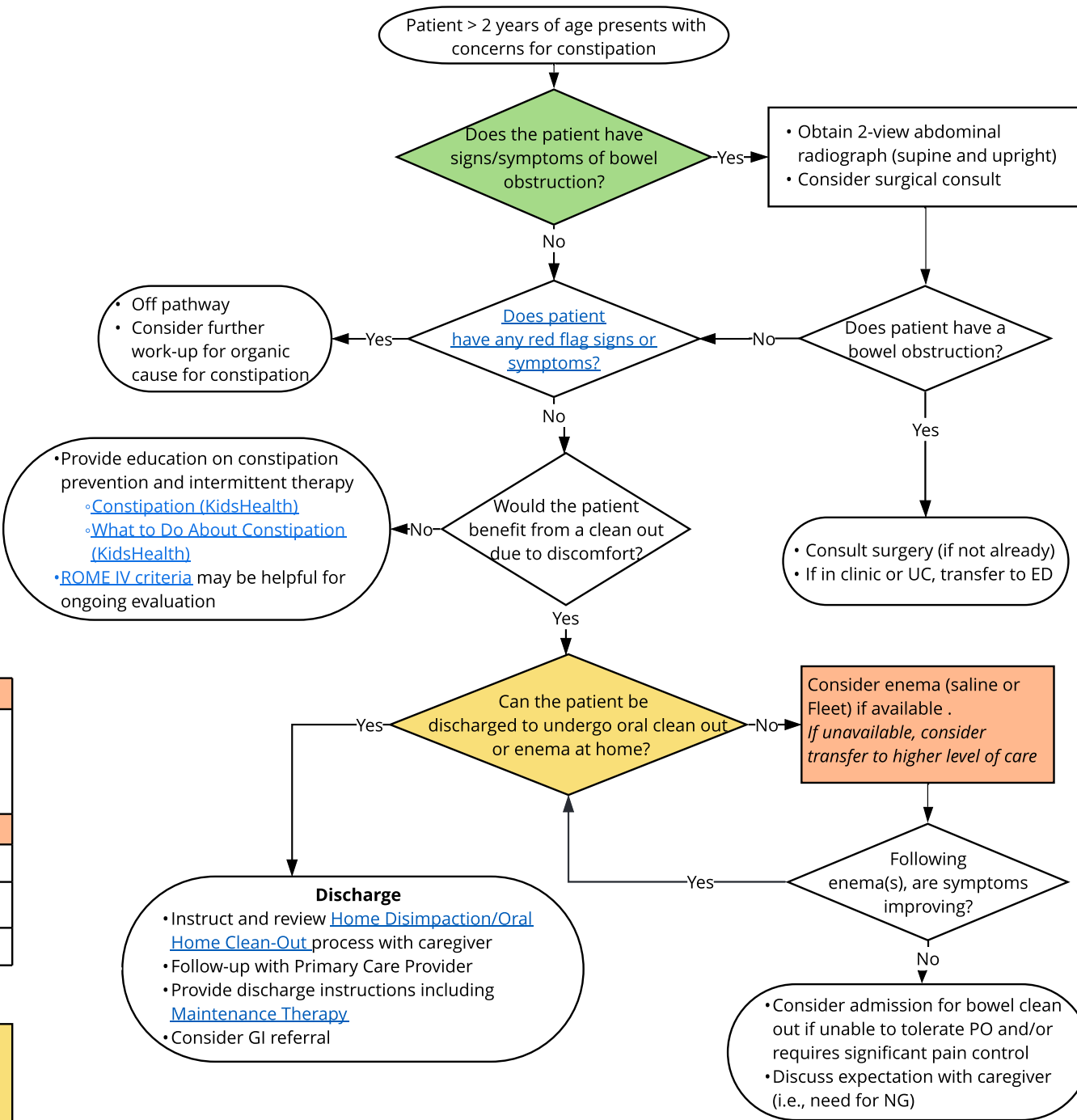
Bowel Obstruction Signs and Symptoms:

- Tense abdominal distention
- Persistent or bilious emesis
- Not passing gas

Saline Enema	
Volume 10 mL/kg (Max: 500 mL)	
Fleet® Enema	
2 - 4 years	30 ml
5 - 11 years	60 ml
> 12 years	130 ml

Discharge Criteria:

- Patient can tolerate PO and aggressive clean out plan
- Discomfort is manageable at home



QR code for mobile view

This clinical pathway is meant as a guide for physicians and healthcare providers. It does not establish a standard of care, and is not a substitute for medical judgment which should be applied based upon the individual circumstances and clinical condition of the patient. Printing of Clinical Pathways is not recommended as these documents are updated regularly . Copyright © The Children's Mercy Hospital 2024. All rights reserved.