



QR code for mobile view

Exclusion criteria:

- Patients < 2 months of age
- Immunocompromised pts
- Patients receiving home mechanical ventilation
- Patients with underlying lung disease (e.g., cystic fibrosis), immunodeficiency, technology dependence, or other chronic conditions that may impact antibiotic selection

Imaging

- Chest X-ray is not routinely recommended for uncomplicated pneumonia.
- Consider chest X-ray in cases of diagnostic uncertainty, documented hypoxemia and respiratory distress, or failed initial antibiotic therapy to assess for complications of pneumonia

Labs

- Blood cultures may be obtained for hospitalized pts meeting the following criteria:
 - < 6 months of age with fever
 - Not fully immunized
 - Central venous catheter
 - Admission to ICU
 - Effusion or empyema on chest radiograph
- Additional labs, including CBC and inflammatory markers, are not routinely recommended for pts with uncomplicated CAP

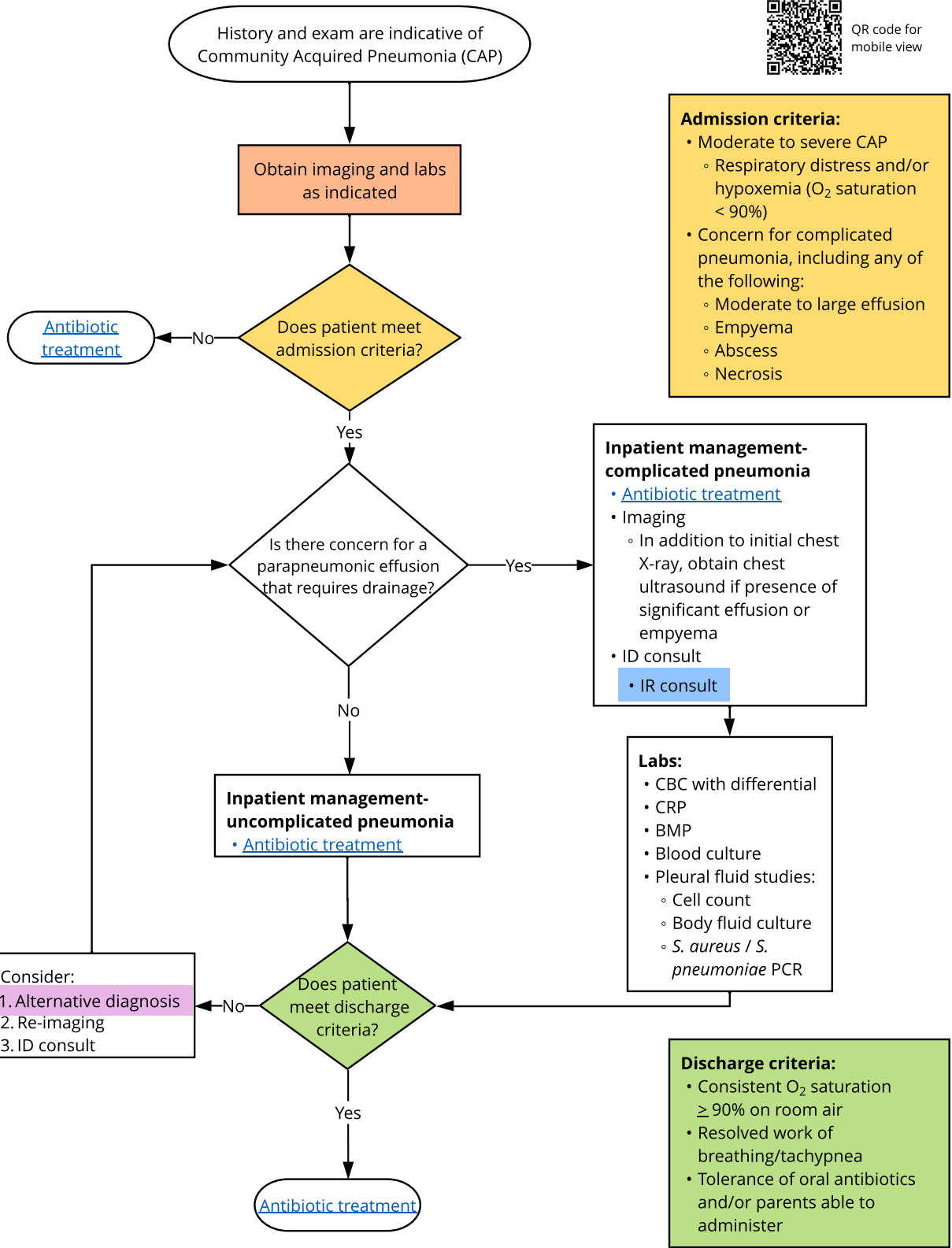
IR

- Consult IR for moderate to large parapneumonic effusions or empyema

Alternative diagnoses:

- Foreign body aspiration
- Aspiration pneumonia
- Tuberculosis or histoplasmosis*
- Other uncommon infections of the lungs*
- Tumor
- Anatomic malformation

*ID consult recommended



Admission criteria:

- Moderate to severe CAP
 - Respiratory distress and/or hypoxemia (O₂ saturation < 90%)
- Concern for complicated pneumonia, including any of the following:
 - Moderate to large effusion
 - Empyema
 - Abscess
 - Necrosis

Inpatient management-complicated pneumonia

- Antibiotic treatment
- Imaging
 - In addition to initial chest X-ray, obtain chest ultrasound if presence of significant effusion or empyema
- ID consult
- IR consult

Labs:

- CBC with differential
- CRP
- BMP
- Blood culture
- Pleural fluid studies:
 - Cell count
 - Body fluid culture
 - *S. aureus* / *S. pneumoniae* PCR

Discharge criteria:

- Consistent O₂ saturation ≥ 90% on room air
- Resolved work of breathing/tachypnea
- Tolerance of oral antibiotics and/or parents able to administer

Abbreviations (laboratory & radiology excluded):

IR = Interventional Radiology
 ID = Infectious Diseases

This clinical pathway is meant as a guide for the healthcare provider, does not establish a standard of care, and is not a substitute for medical judgment which should be applied based upon the individual circumstances and clinical condition of the patient. Copyright © The Children's Mercy Hospital 2024. All rights reserved.