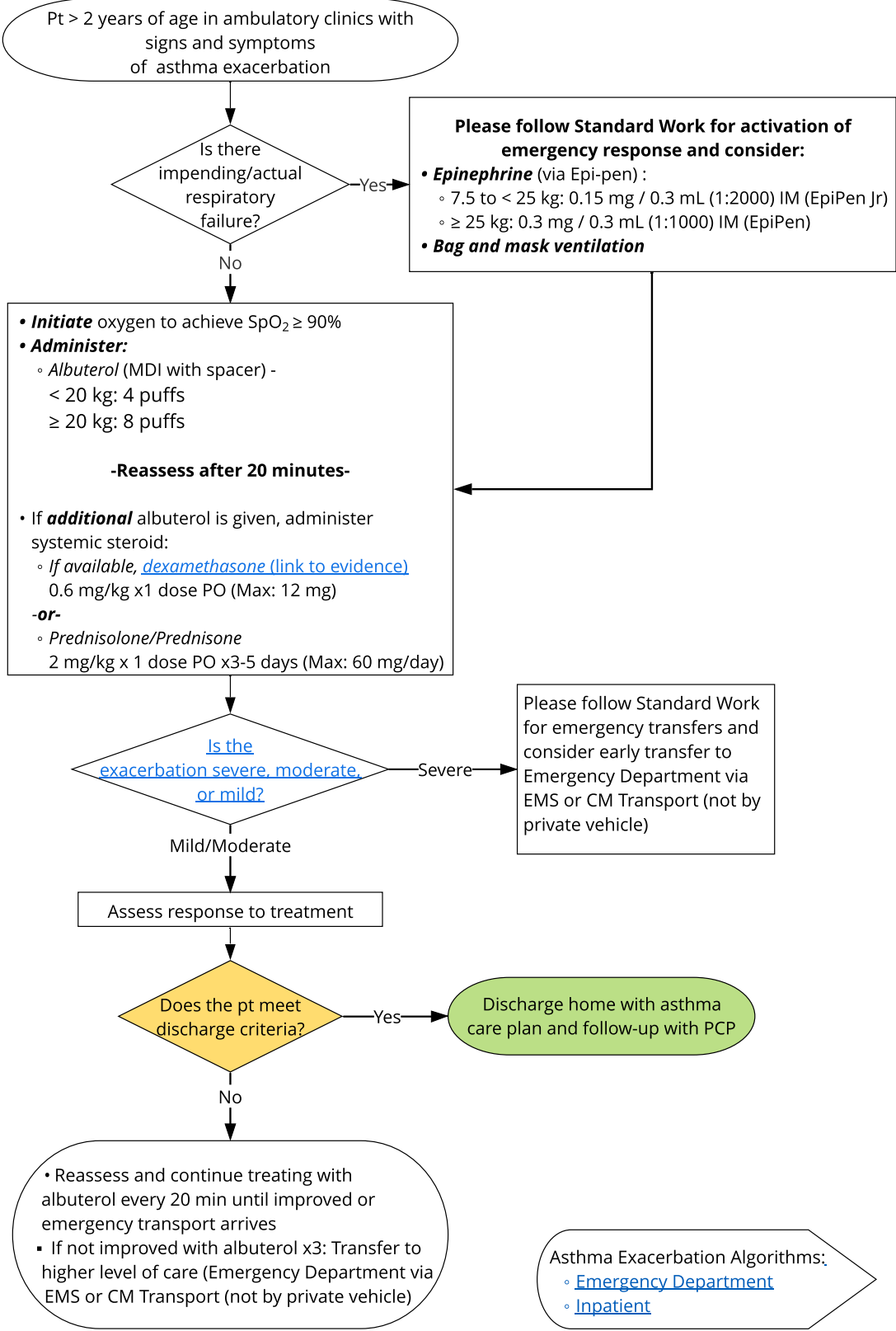




QR code for
mobile access



Discharge Criteria

All of the following:

- Resolution of respiratory distress
- Resolution of hypoxemia (SpO₂ ≥ 90% on room air)
- Do not anticipate albuterol will be needed more frequently than q4 hours
- Ability of caregiver to provide q4h albuterol at home

Discharge Checklist

- **Continue** yellow zone therapies on discharge
- **Determine** [systemic steroid plan](#) based on initial steroid administered and patient needs
- **Consider** "stepping up" green zone therapies if indicated
- **Provide** Asthma Action Plan and [asthma education](#)
- **Recommend** appropriate follow-up with either PCP or Asthma Provider
- **Confirm** pt has access to prescribed medications within 2-3 hours after discharge

Other Resources

- [Asthma Reference Guide](#)
- [Caregiver Smoking Cessation](#)